

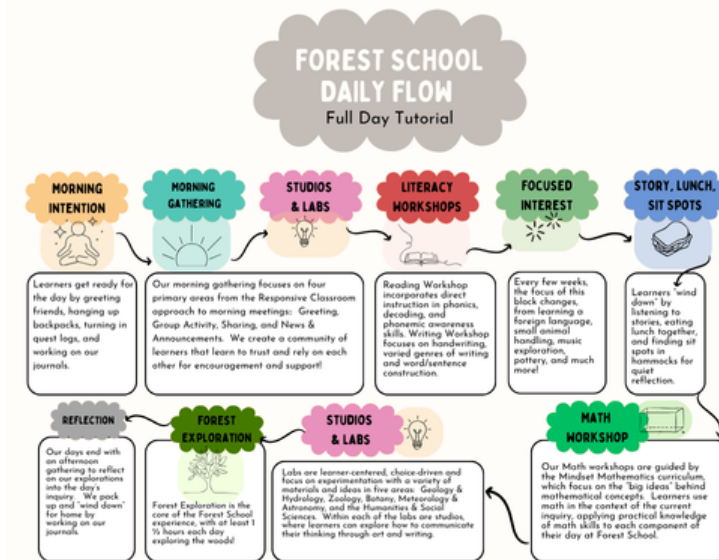
# OAKVIEW FARM FOREST SCHOOL

## FAMILY HANDBOOK GUIDE

*Ask us to email you a copy of the full Family Handbook!*

### ***Our Guiding Vision:***

**We hold the belief that every child deserves the chance to experience the tranquility that arises from connecting with nature. We believe the natural world possesses a remarkable ability to strengthen relationships, cultivate compassion, and ignite creativity within us all.**



### Half Day Kindergarten "Daily Flow"

8:45-9:15 Drop Off and "Heartful" Greetings

9:15-9:45 Morning Tea, Handwork, Farm Exploration

9:45-10:15 Snack, Storytime, and Reflection

10:15-12:00 Morning Gathering & Forest Exploration

12:00-12:30 Farm Exploration and Reflection

**Group Ethos:** Learners help shape the "Ethos", or guidelines, for their programs. We use compassionate language when talking to each other at Forest School.

### Enrollment Process:

1. Set up a tour using our Tour Request form. (\$10 application fee)
2. Tour the School.
3. Come back for a longer Stay and Play experience or finish enrollment.

**Food:** Snacks and lunch provided by families

**Curriculum:** Emergent Inquiry Based Learning

**Calendar:** August 18th-May 20th. Following Rutherford County Schools Academic Calendar

**Tuition:** \$215/month (Half Day 9-12:30); \$315/month (Full Day 9-3:30) +\$50 enrollment fee

**Teacher/Student Ratio (Max):** 1:5

**Safety:** We believe that children in Oakview Farm Forest School have the right to feel personally safe in all spaces and throughout all activities. We strictly follow all safety guidelines outlined in our Family Handbook. Staff are background checked, visitors must sign in, and volunteers must complete training.

**Outdoor-Only:** We are an outdoor-only program. Proper weather attire must be worn in accordance with staff guidelines.

**Toileting:** Children must be independently toilet proficient to access our program. We use composting toilets in our main Base Camp building.

**WE ARE PROUD TO BE  
ACCREDITED BY THE FOREST  
SCHOOL TEACHER INSTITUTE!**

